

# Preventing unnecessary hospital admissions by improving the referral to nursing homes from the emergency department

Marieke Meinardi, Marije Lauwaars, Martine Fens, Annemarie van der Velden, Annemieke van Oostveen, Inger Montfoort, Jeroen Wien  
Contact; J.S.Wien@asz.nl

## CONCLUSION

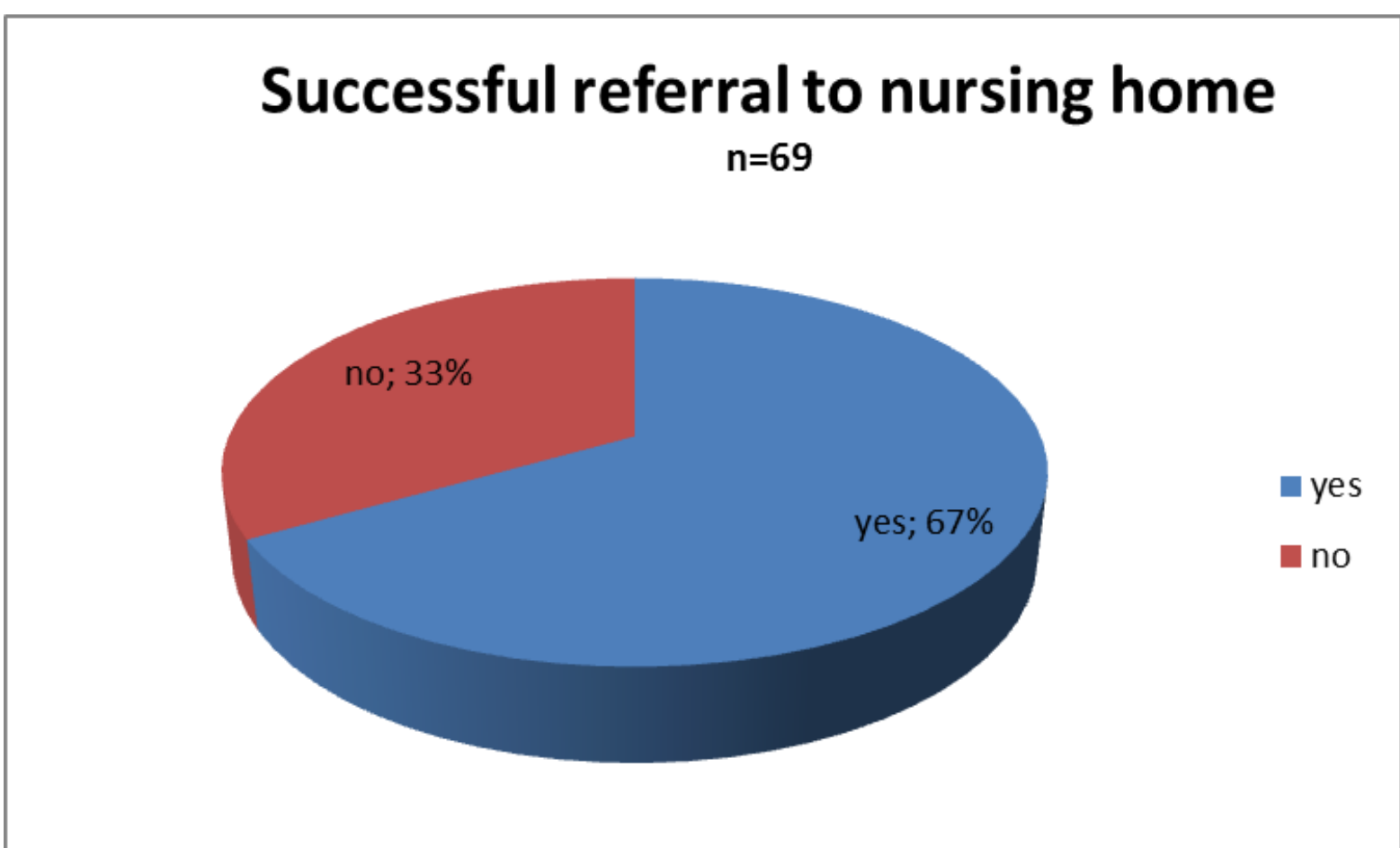
Improving the clinical pathway to refer fragile patients to a nursing home prevents unnecessary hospital admissions.

Finally this results in better patient care and cost saving for hospitals.

## BACKGROUND

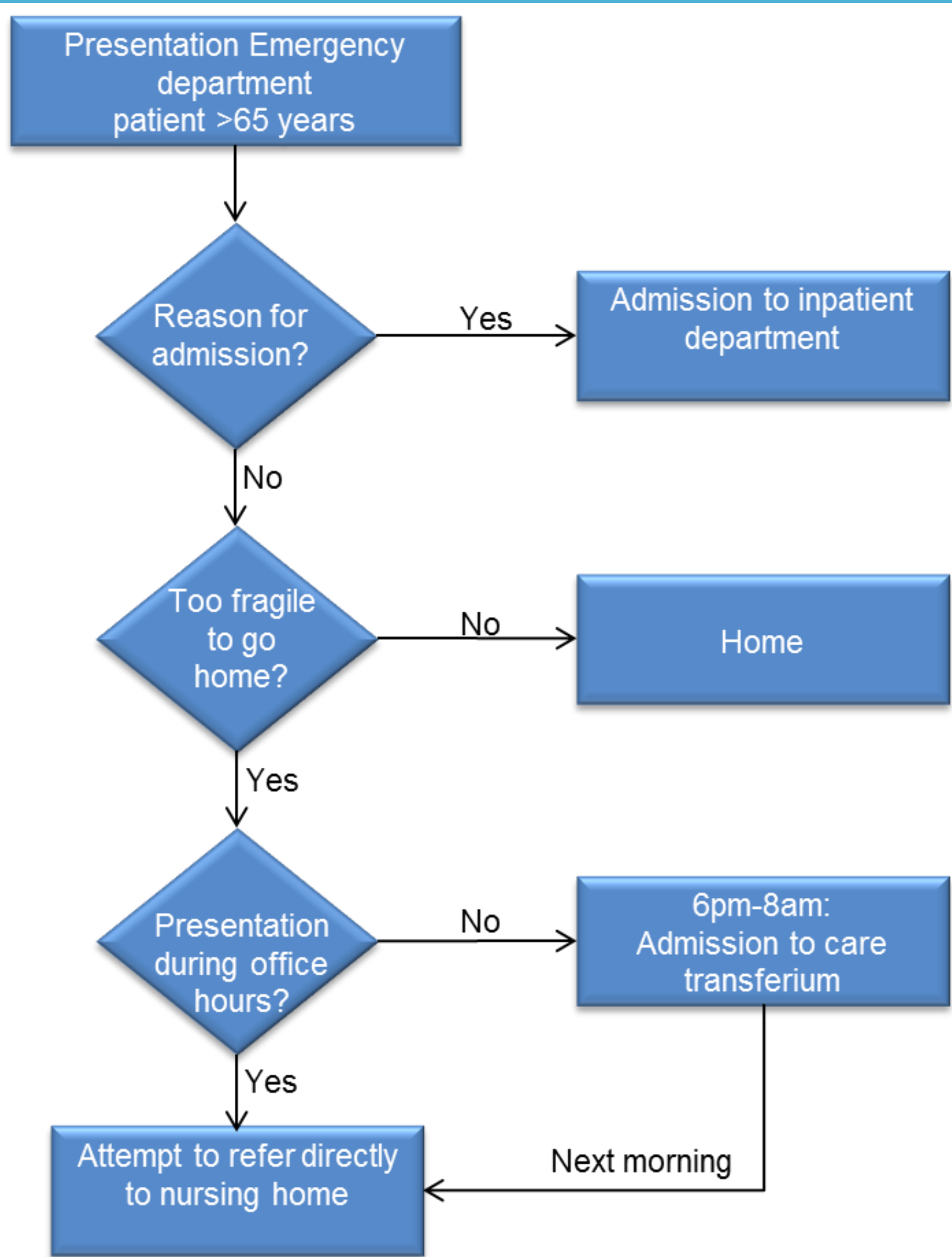
- A large fragile population is presented at the emergency department in Dutch hospitals (caused by an aging population and cost saving in elderly care delivered by governmental services).
- In this group there is a category of patients who have no reason for hospital admission but are too fragile to go home(mobility problems and confusion).
- The aim of this project was to get more insight in prevention of hospital admission by facilitating the referral to a nursing home.

## RESULTS 1



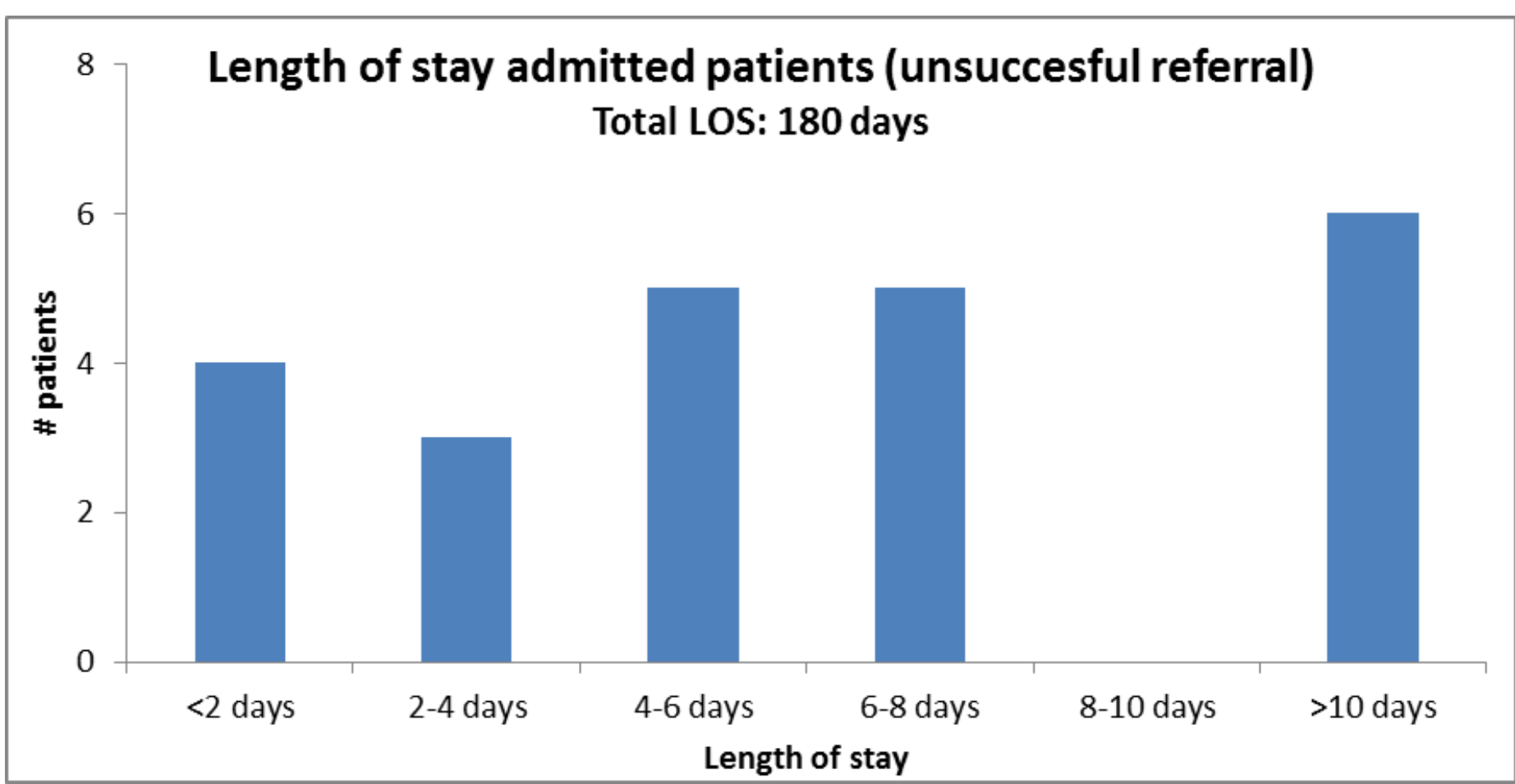
- 46 unnecessary hospital admissions prevented.
- An average of 12 patients a month were seen being too fragile to go home(visiting the ED and having no indication for hospital admission).

## METHODS



## RESULTS 2

- In case of referral to a nursing home was not successful it took us altogether 180 days to finally discharge these patients to a suitable bed in a nursing home.



Costs hospital admitted patients	€ 140,000
Costs paid by Health insurance	€ 117,000
Costs at the expense of hospital	€ 23,000

## DISCUSSION

- Crisis capacity for the care of fragile elderly during evening & night hours is of added value to avoid unnecessary hospital admissions.
- High cost savings by the Dutch government are among other things the reason that a large fragile population is presented to the ED.